

PORTAL Fakultät WIM

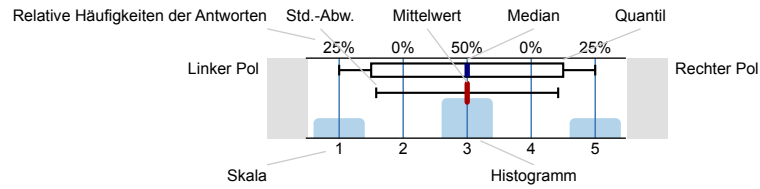
Web Data Integration - Prof. Bizer - Vorlesung (2)
Erfasste Fragebögen = 19



Auswertungsteil der geschlossenen Fragen

Legende

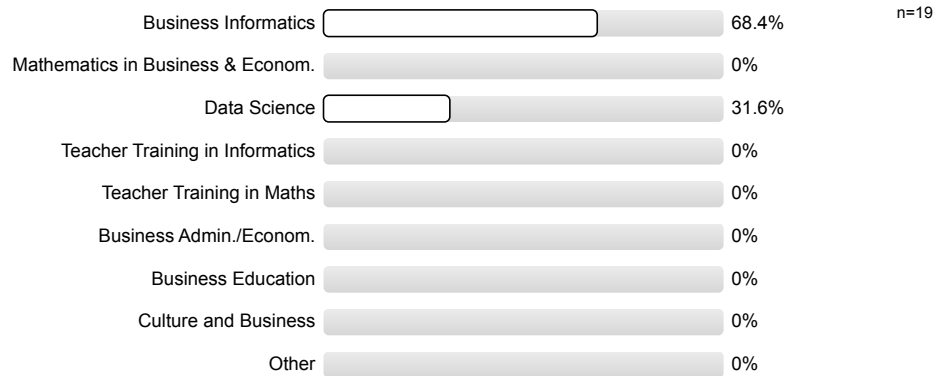
Frage-
text



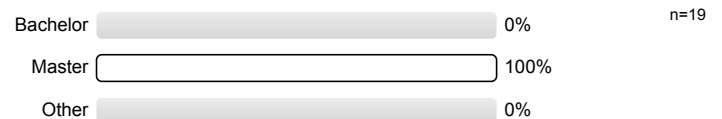
n=Anzahl
mw=Mittelwert
md=Median
s=Std.-Abw.
E.=Enthaltung

1. Personal Details

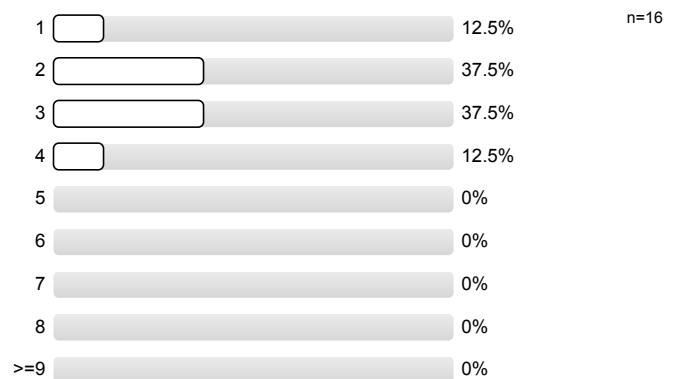
1.1) My program



1.2) My anticipated degree



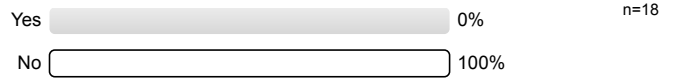
1.3) My semester



1.4) My Gender

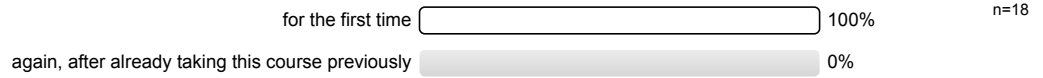


1.5) I am an international exchange student

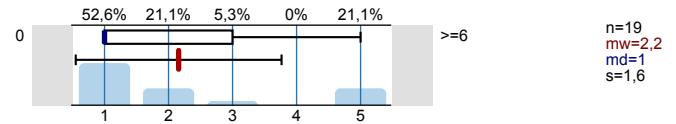


2. Details on your course attendance

2.1) I am taking this course



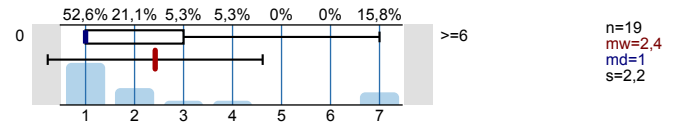
2.2) How regularly did you attend this lecture course – how often were you absent from class?



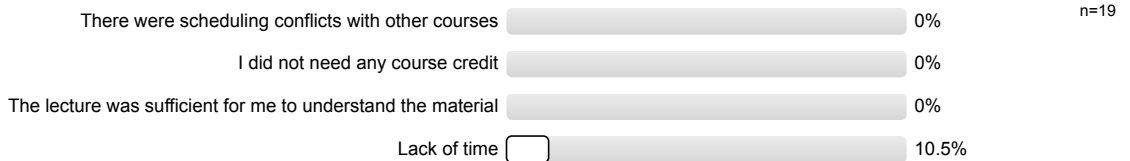
2.3) If you missed more than three classes, what were the reasons for your absence? (Multiple answers are possible)



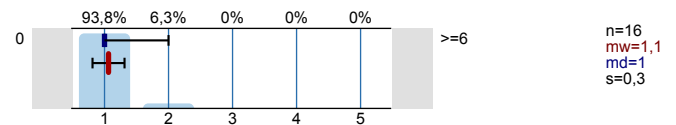
2.4) How regularly did you attend the tutorial for this lecture course – how often were you absent from the tutorial? Please leave blank if no accompanying lecture was offered.



2.5) 1. If you missed more than three classes, what was the main reason for your absences? (Multiple answers are possible)

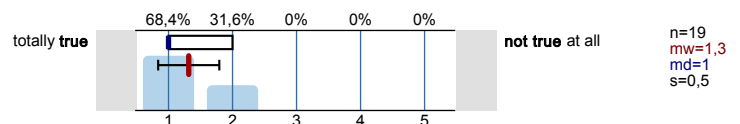


2.6) 1. How often was there a substitute teacher?

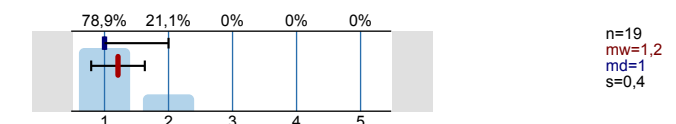


3. Evaluation of the course

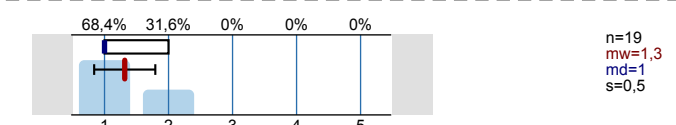
3.1) The instructor explained the educational goals of the course



3.2) A common theme could be perceived in the course.

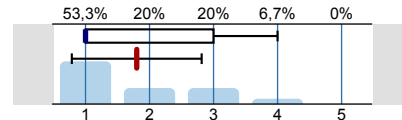


3.3) The course was well organized



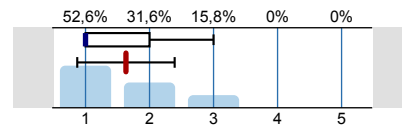
3.4)	The structure of the lecture helped me understand the subject matter		n=19 mw=1,3 md=1 s=0,5
3.5)	The pace of the course was appropriate		n=19 mw=1,5 md=1 s=0,8
3.6)	The lectures were clear and comprehensible		n=19 mw=1,3 md=1 s=0,5
3.7)	The course content was illustrated through the use of examples		n=19 mw=1,2 md=1 s=0,5
3.8)	Summaries and repetition helped me to remember the subject matter		n=19 mw=1,7 md=2 s=0,8
3.9)	There were opportunities to ask questions		n=19 mw=1,1 md=1 s=0,3
3.10)	The instructor made an effort to answer questions precisely		n=18 mw=1,2 md=1 s=0,5
3.11)	The instructor tried to make sure students understood the explanations		n=19 mw=1,4 md=1 s=0,6
3.12)	Information on the board/screen was legible		n=19 mw=1,2 md=1 s=0,4
3.13)	Information on the board/screen increased my understanding of the subject matter		n=18 mw=1,4 md=1 s=0,9
3.14)	The use of classroom technology (not including overhead/board) was helpful		n=19 mw=1,3 md=1 s=0,6
3.15)	Additional documents and downloads (i.e. copies, scripts, recordings) were helpful learning tools		n=18 mw=1,8 md=1 s=1
3.16)	The recommended literature was available		n=15 mw=1,5 md=1 s=1

3.17) The **recommended literature** helped my learning process



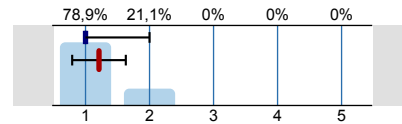
n=15
mw=1,8
md=1
s=1

3.18) The instructor's **diction/manner of speaking** was **clear**



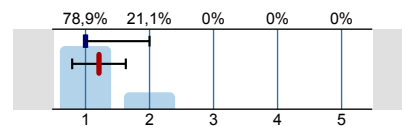
n=19
mw=1,6
md=1
s=0,8

3.19) The instructor always seemed to be **well prepared**



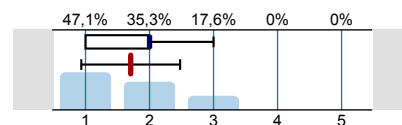
n=19
mw=1,2
md=1
s=0,4

3.20) I had the impression that the instructor **truly enjoyed teaching**



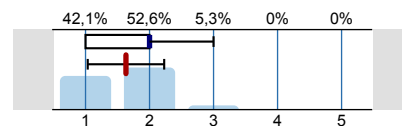
n=19
mw=1,2
md=1
s=0,4

3.21) The **instructor** was **willing** to tailor lessons to students' academic interests



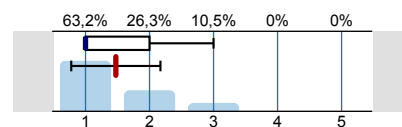
n=17
mw=1,7
md=2
s=0,8

3.22) The lecture **fostered my interest** in the course content



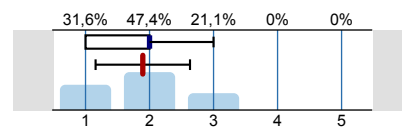
n=19
mw=1,6
md=2
s=0,6

3.23) The **connection to other courses** was demonstrated



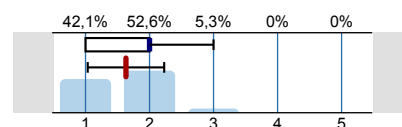
n=19
mw=1,5
md=1
s=0,7

3.24) The course topic was **well integrated with other courses**



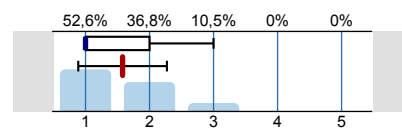
n=19
mw=1,9
md=2
s=0,7

3.25) The **relevance** of the course to **educational goals** was made clear



n=19
mw=1,6
md=2
s=0,6

3.26) I feel that the course content was **important for my future career**



n=19
mw=1,6
md=1
s=0,7

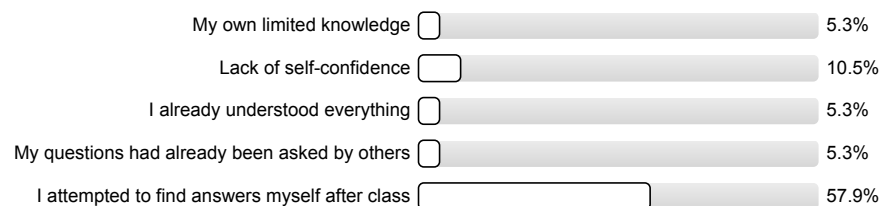
4. Evaluation of your own participation

4.1) **I asked questions during class**



n=19

4.2) **If not, why not?** (Multiple answers are possible)



n=19

4.3) What was the average **weekly amount of time you spent preparing for and reviewing after the lecture course** (not including class time, time in the discussion group/tutorial, or time devoted to completing worksheets)?

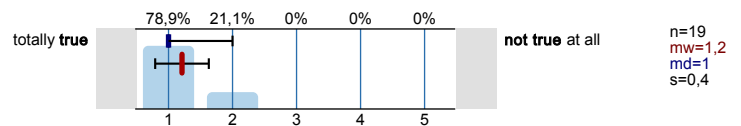


4.4) What was the average **weekly amount of time you spent completing worksheets** (not including class time and time in the discussion group/tutorial)?

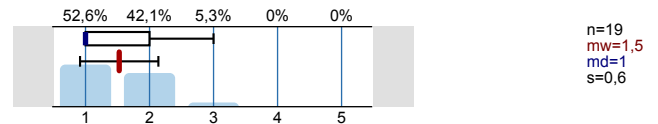


5. Overall evaluation of the course

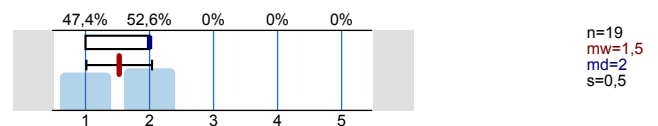
5.1) The lecture course **increased my subject matter knowledge**



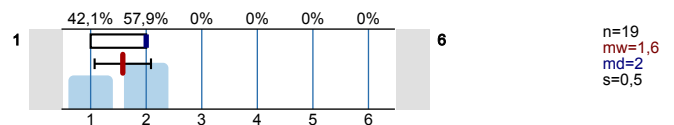
5.2) I **enjoyed attending** the lecture course



5.3) I **understood** the course content

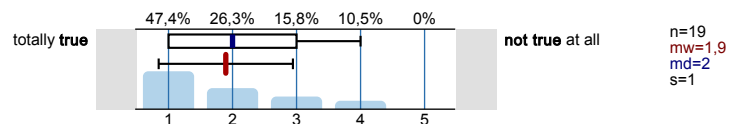


5.4) I would rate the lecture course **on a scale of 1** (very good) to 6 (very poor):

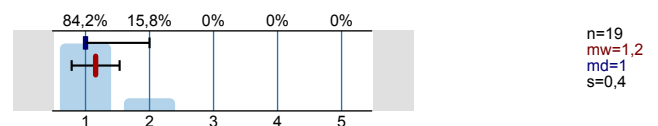


6. Evaluation of the classroom conditions and prerequisites

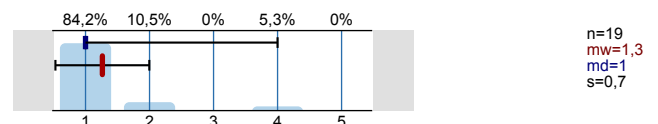
6.1) My **previous knowledge** was sufficient for mastering the course content



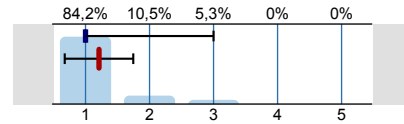
6.2) The **technical equipment** (overhead, board, projector, microphone) was ready for use when necessary



6.3) The **size of the room** was appropriate for the course

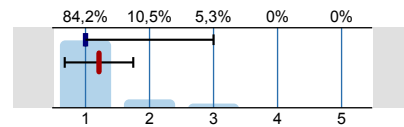


6.4) The **level of background noise** in the classroom was tolerable



n=19
mw=1,2
md=1
s=0,5

6.5) The **room fixtures** (chairs, tables, ventilation, light, etc.) were good



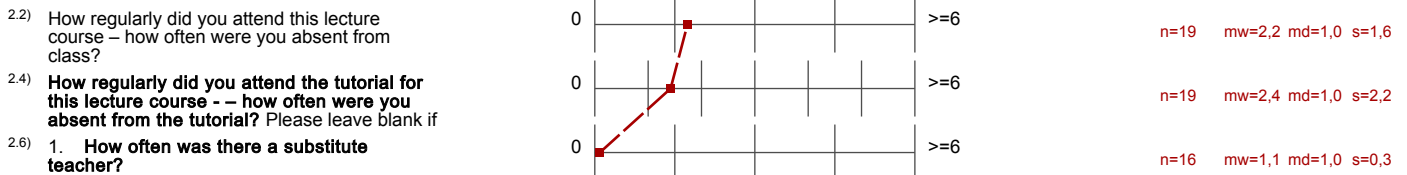
n=19
mw=1,2
md=1
s=0,5

Profillinie

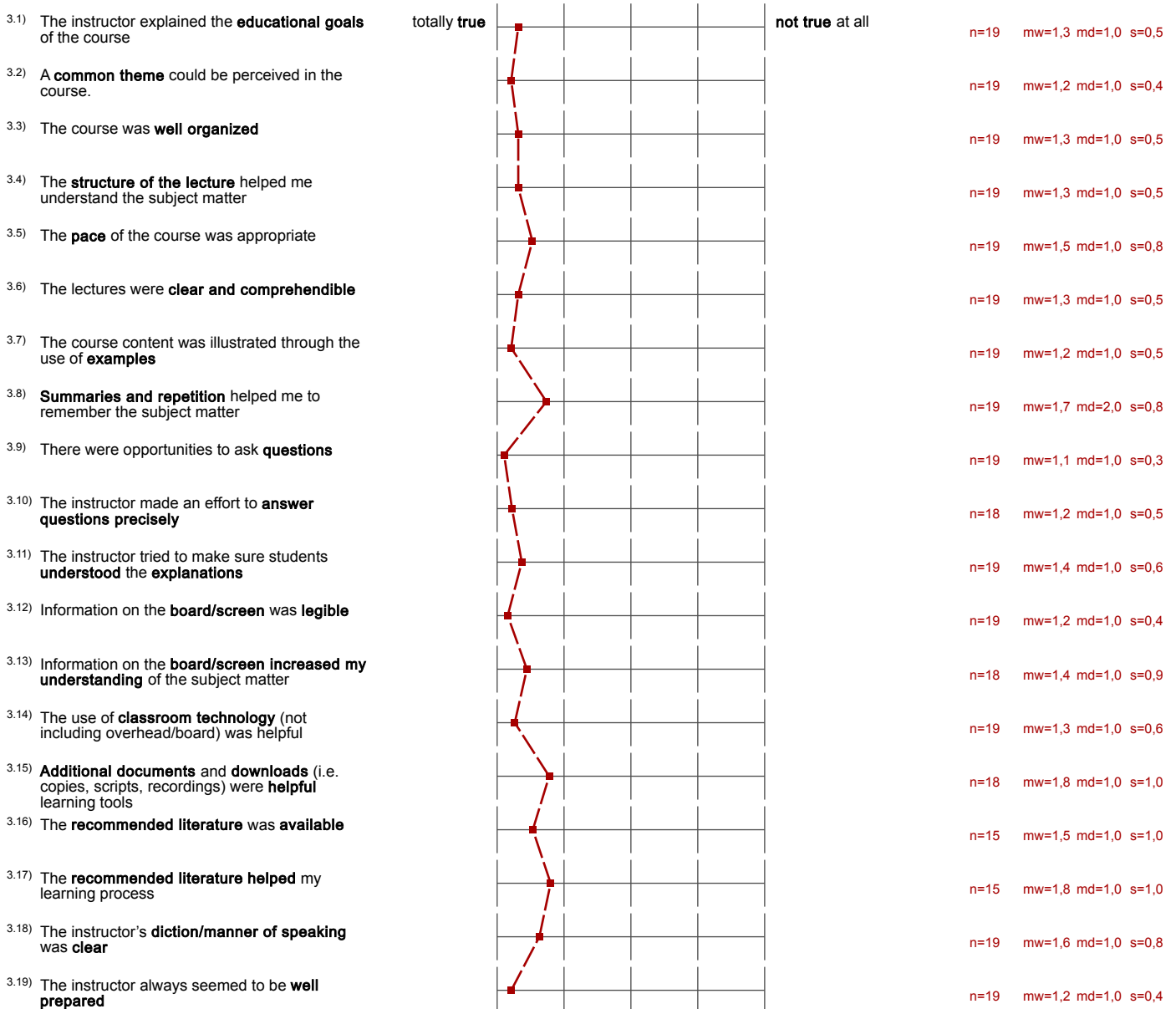
Teilbereich: Fakultät WIM
 Name der/des Lehrenden: PORTAL Fakultät WIM
 Titel der Lehrveranstaltung: Web Data Integration - Prof. Bizer - Vorlesung
 (Name der Umfrage)

Verwendete Werte in der Profillinie: Mittelwert

2. Details on your course attendance



3. Evaluation of the course



3.20) I had the impression that the instructor truly enjoyed teaching		n=19 mw=1,2 md=1,0 s=0,4
3.21) The instructor was willing to tailor lessons to students' academic interests		n=17 mw=1,7 md=2,0 s=0,8
3.22) The lecture fostered my interest in the course content		n=19 mw=1,6 md=2,0 s=0,6
3.23) The connection to other courses was demonstrated		n=19 mw=1,5 md=1,0 s=0,7
3.24) The course topic was well integrated with other courses		n=19 mw=1,9 md=2,0 s=0,7
3.25) The relevance of the course to educational goals was made clear		n=19 mw=1,6 md=2,0 s=0,6
3.26) I feel that the course content was important for my future career		n=19 mw=1,6 md=1,0 s=0,7

5. Overall evaluation of the course

5.1) The lecture course increased my subject matter knowledge		n=19 mw=1,2 md=1,0 s=0,4
5.2) I enjoyed attending the lecture course		n=19 mw=1,5 md=1,0 s=0,6
5.3) I understood the course content		n=19 mw=1,5 md=2,0 s=0,5
5.4) I would rate the lecture course on a scale of 1 (very good) to 6 (very poor):		n=19 mw=1,6 md=2,0 s=0,5

6. Evaluation of the classroom conditions and prerequisites

6.1) My previous knowledge was sufficient for mastering the course content		n=19 mw=1,9 md=2,0 s=1,0
6.2) The technical equipment (overhead, board, projector, microphone) was ready for use when necessary		n=19 mw=1,2 md=1,0 s=0,4
6.3) The size of the room was appropriate for the course		n=19 mw=1,3 md=1,0 s=0,7
6.4) The level of background noise in the classroom was tolerable		n=19 mw=1,2 md=1,0 s=0,5
6.5) The room fixtures (chairs, tables, ventilation, light, etc.) were good		n=19 mw=1,2 md=1,0 s=0,5